

# Arecont Vision MegaVideo® AV3100M Network Camera

# AV3100M

- **3 Mpixel IP-camera sensitive to 0.2 lux @ F 1.4**
- **Frame Rate 22 fps @ Resolution 1,920 x 1,080**

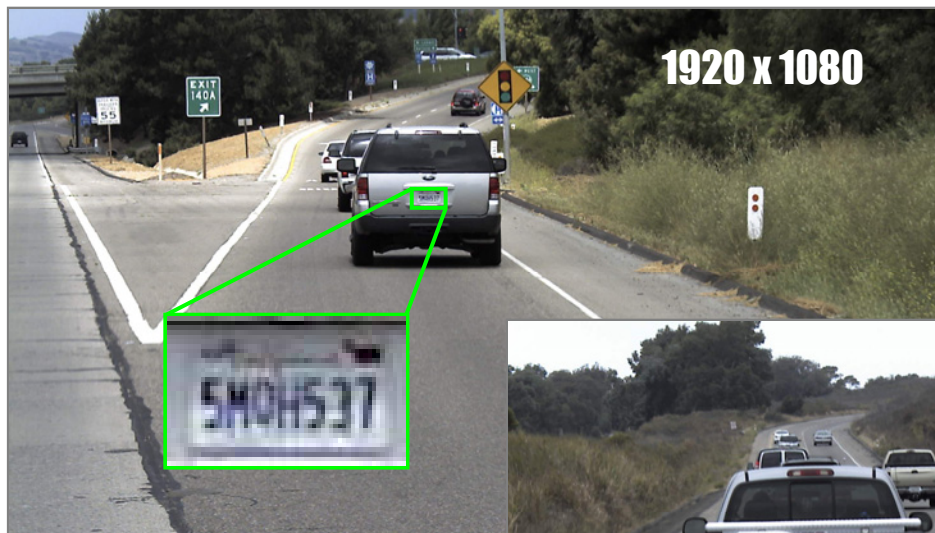
The AV-3100M offers cinema compatible frame rates to allow real time high definition digital video surveillance with 10 times the resolution of the best analog surveillance cameras.

- **SUPERB HIGH RESOLUTION & FULL MOTION:** AV3100M network camera delivers full motion progressive scan 1920 x 1080 video at 22 fps featuring massively-parallel MegaVideo® image processing architecture capable of sustaining over 6 billion operations per second.

- **SUPERB COST EFFICIENCY:** High resolution and crystal clear imagery allows the AV3100M to substitute up to ten analog cameras; thereby reducing the total cost of installation. No need to supply a separate power source since the power can be drawn from a low cost Power-over-Ethernet switch.

- **SUPERB FORENSIC ZOOMING:** AV3100M surveillance system has the ability to zoom after the event from high resolutions digital archives and the simultaneous viewing of zoomed and full field of view images.

- **EXCELLENT MOTION DETECTION:** Onboard real-time motion detection with size and sensitivity controls for up to 64 separate motion detection zones.



**Day or Night  
MegaVideo® Technology  
Delivers Full Motion  
HDTV Resolution  
at NTSC Price**

Images are taken  
with **COMPUTAR  
MEGAPIXEL LENS**  
25mm focal length



## Arecont Vision

2400 Lincoln Avenue, Altadena, CA 91001, USA  
Toll Free (877) CAMERA-8 (626) 296-6453

## Imaging

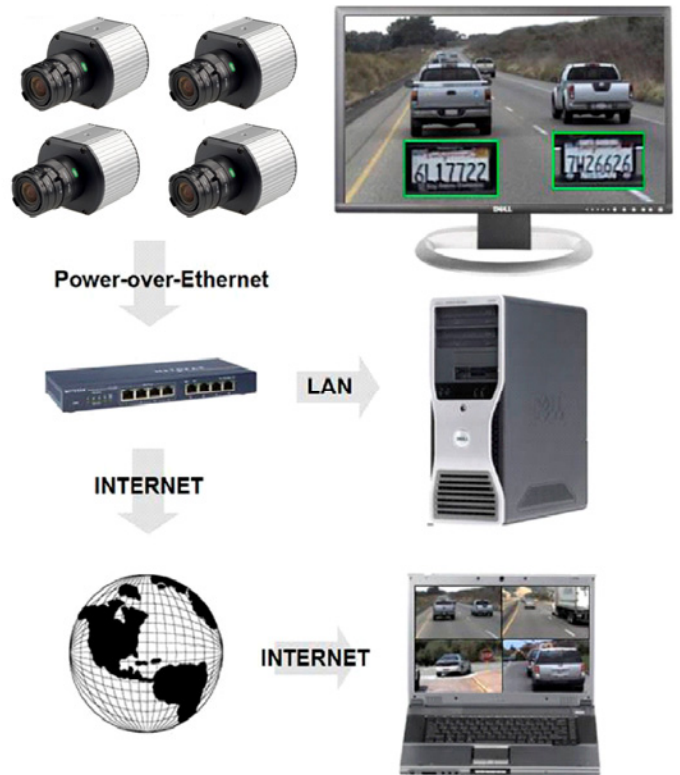
- 3 Megapixel CMOS Image Sensor
- 2048(H) x 1536(V) pixel array
- 1/2" optical format
- 3.2 µm pixel pitch
- Bayer mosaic RGB filter
- Sensitivity 0.2 lux @ F1.4
- Dynamic Range 60 dB
- Maximum SNR 41 dB

## Data Transmission

- Data Rate up to 55Mbps
- Video Frame Rate up to 22 fps @ 1920x1200
- Motion JPEG with 20 levels of quality
- TFTP and HTTP Image Transmission Protocols
- 100Base-T Ethernet Network Interface

## Programmability

- Auto Exposure (AE) and Gain Control (AGC) >120dB
- Auto Backlight Compensation
- On Camera Motion Detection with 64 detection zones
- Auto Multi-Matrix White Balance
- 50/60Hz selectable Flicker Control
- Electronic Pan, Tilt, Zoom (PTZ)
- Electronic Image Rotation - up-side down image turn
- Resolution windowing down to 32x32 pixels window
- Programmable Motion Blurring Control for Low-Light Mode
- MoonLight™ Mode – extended exposure and proprietary noise cancellation
- Programmable Resolution, Brightness, Saturation, Gamma, Sharpness, Tint
- Pictures-In-Picture: Simultaneous delivery of full field of view and zoomed images



## Electrical

- Opto-coupled alarm input, Opto-coupled alarm and flash sync output
- Power over Ethernet (PoE) or DC Input
- PoE 802.3af / auxiliary 12V - 48V DC
- Power Consumption 3 Watts maximum

## Regulatory Approvals

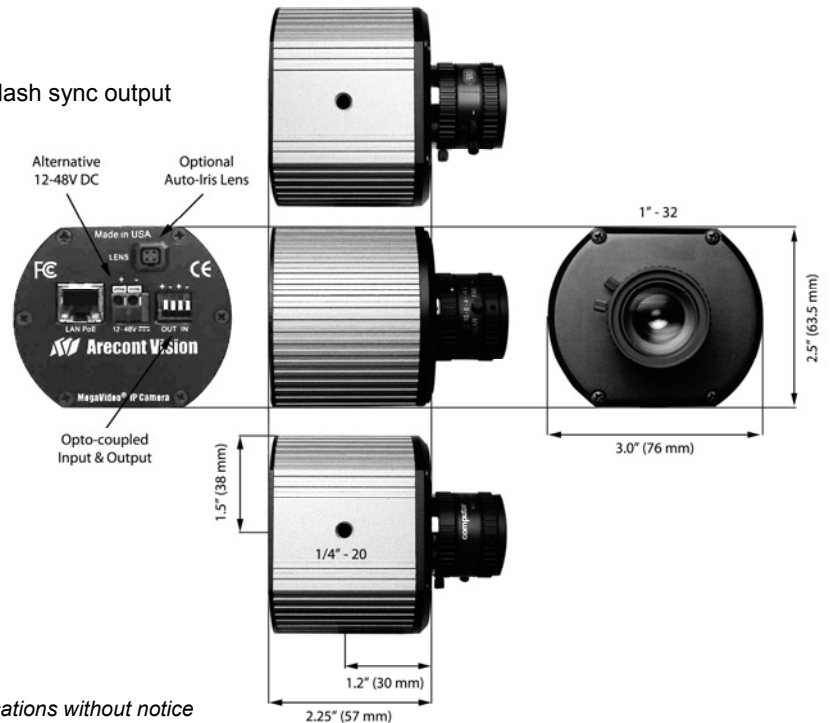
- FCC Part 15, Class B
- CE compliant

## Mechanical

- 3"W x 2.5"H x 2.25"D (w/o lens)
- 8.6 oz or 243 grams (w/o lens)
- C/CS Lens Mount

## Environmental

- Operating Temperature 0°C to +50°C
- Storage Temperature -20°C to +60°C
- Humidity 0% to 90% (non condensing)



Arecont Vision reserves the right to change products or specifications without notice